



Punch & Pin
www.punchandpin.com

COLD EMBOSsing

Embossing is the process of pressuring a roll of embossing cylinder which has a pattern engraved on its surface.

MOD. SM-ECM

The embossing machine consists of a shaft with embossed engravings, pressed against another cylinder covered with rubber. A special device coordinate the cylinders, preventing them from slipping and ensuring a clear impression of the design. The final products are: Embossing stripes on heavy duty sacks for reducing slippage during palletisation , Smooth Embossing Disposable Gloves, Smooth embossing for cigarettes , Smooth embossing for butte, Smooth embossing for chocolate .



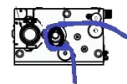
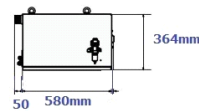
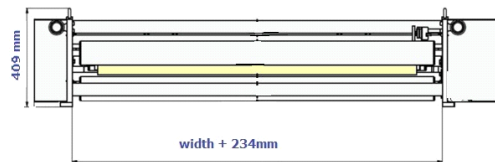
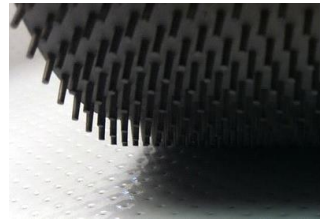
Features

Max material width 3000mm

Max speed 200 meters per minute

Installation on bag making machine, extruder, slitter, printing machine and so on

Pneumatic device for adjusting the depth of the pins Yes



Punch and Pin srl
Corso XX settembre,11
21052 Busto Arsizio (VA) - IT
P.iva/ Vat N. IT 03772850123 - REA: VA-377853
www. Punchandpin.com - tel. +39 3791244387
e-mail: rosanna@punchandpin.com